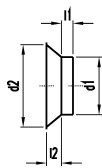


## Einlaßteile

Inlets

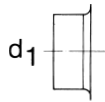


Artikel ELTE

d1	€/St.
71	13,25
80	13,25
90	13,90
100	13,90
112	15,65
125	15,65
140	16,60
150	16,60
160	16,60
180	17,90
200	19,00
224	22,50
250	23,55
280	25,60
300	31,95
315	33,15
355	39,85
400	46,45
450	48,60
500	51,10
560	67,40

## Einstromdüsen

Admission pipe

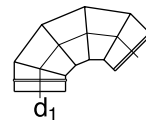


Artikel ESDE

d1	€/St.
71	4,70
80	4,75
90	4,85
100	4,85
112	5,25
125	5,25
140	6,00
150	6,00
160	6,10
180	6,45
200	7,30
224	7,60
250	9,40
280	10,45
300	14,15
315	15,90
355	25,50
400	25,50

## Ansaugbogen 135°

Suction bend 135°



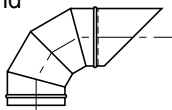
Artikel ASBE

d1	€/St.
71	
80	56,60
90	56,60
100	56,40
112	57,55
125	55,95
140	58,95
150	61,05
160	63,40
180	67,45
200	72,05
224	77,60
250	87,30
280	95,85
300	101,85
315	104,90
355	119,35
400	138,15
450	169,35
500	192,65
560	317,70

d1	€/St.
600	336,90
630	359,55
710	468,20
800	605,80
900	711,80
1000	939,70
1120	1245,80
1250	1465,95
1400	1851,75
1600	2324,95

## Auslaßbogen 90°

mit R = 0,7 D mit Vogelschutzgitter  
Exhaust bend 90° with R = 0,7 D  
with bird protection grid

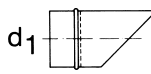


Artikel ALBE

d1	€/St.
71	48,25
80	49,20
90	50,95
100	50,95
112	54,70
125	54,70
140	60,00
150	60,00
160	62,25
180	65,30
200	69,45
224	75,15
250	89,05
280	98,55
300	106,10
315	115,90
355	127,15
400	140,95

## Auslaßstutzen

schräg mit Vogelschutzgitter  
Beveled outled connection  
with guard grill

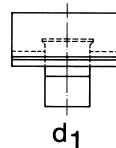


Artikel ALSE

d1	€/St.
71	28,30
80	29,20
90	30,95
100	30,95
112	33,40
125	33,40
140	36,55
150	36,55
160	37,75
180	39,80
200	42,10
224	45,05
250	53,00
280	58,05
300	62,10
315	68,75
355	75,05
400	84,85

## Ansaughauben

Intake hood



Artikel ASHE

d1	€/St.
100	85,05
112	87,60
125	87,60
140	91,15
150	91,15
160	95,50
180	111,00
200	115,45
224	121,65
250	129,70
280	137,35
300	146,90
315	157,15
355	167,85
400	188,65
450	225,35
500	259,90
560	296,80

d1	€/St.
600	342,80
630	372,20